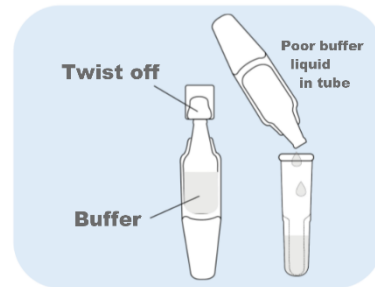
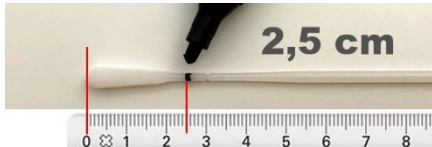


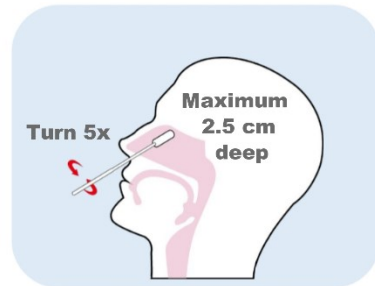
Content: Joysbio Test cassette, Nasal swab, Buffer liquid, Test tube, Test tube cap, Instructions for use.

Please read the entire instructions for use before testing. This guide is not a replacement for the instructions for use.

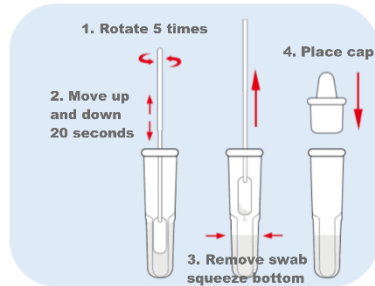
1. Place the test tube vertically in a tube holder. Put the buffer liquid into the test tube.
2. Remove the test cassette from the foil pouch. Place it on a horizontal base.
3. Remove the nasal swab from the foil. Mark 2.5 cms on the nasal swab (see photo).



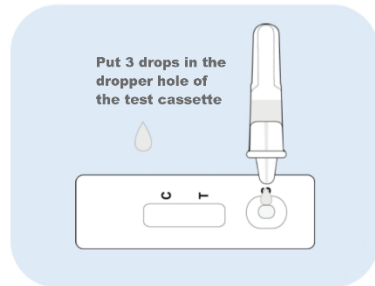
4. Take the sample from the nose with the swab: Insert the swab into both nostrils, the tip should be inserted **up to 2.5 cm** from the outer edge of the nose. Roll the swab 5 times along the mucosa inside the nostril, to ensure that both mucus and cells are collected.



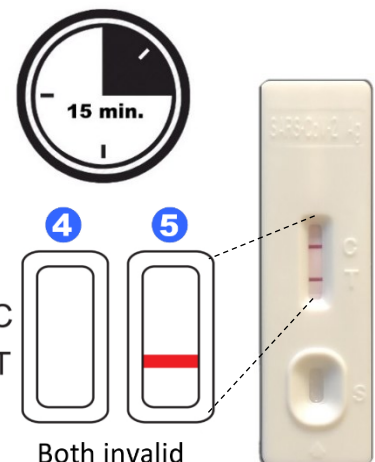
5. Put the tip of the swab inside the test tube all the way to the bottom and turn 5 times and move up and down for 20 seconds. Remove the swab while squeezing the tube, releasing all liquid from the swab. Place the cap on the test tube with the buffer liquid and sample inside.



6. Put 3 drops of the buffer liquid with the sample into the dropper hole of the cassette.



7. Wait 15 minutes to read the test result. Read the test result between 15 and 20 minutes.



### Test result

